



HOSHIZAKI

CERTIFICATION



HACCP International



ISO9001

DCM-80LS-P-HC

ICE & WATER DISPENSER



Key Features



Eco-friendly Refrigerant



Perfect fit

There are no exhaust outlet on the left and right sides and the back, so it can be placed close to the wall.



Easy for maintenance
Notify when parts should be replaced



Enhanced daily cleaning routine

Draining board can be removed



No need to hold the bucket with your hands when removing ice

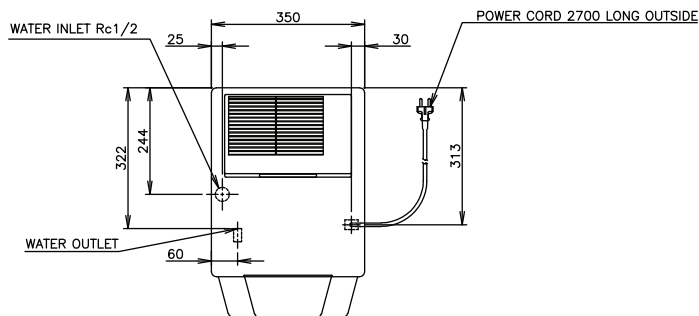
Hoshizaki DCM series are ice/water dispensers producing high-quality servings of cubelet ice and/or water. The three steps of quality ice production, protected ice storage, as well as quick service of ice are all combined in one device – with the help of only one button your refreshment is ready in seconds. With DCM DISPENSERS the user can select from these options:

- Cubelet ice only
- Cubelet ice and water
- Water only



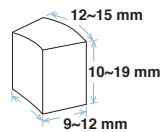
Dimensions & Specifications

TOP

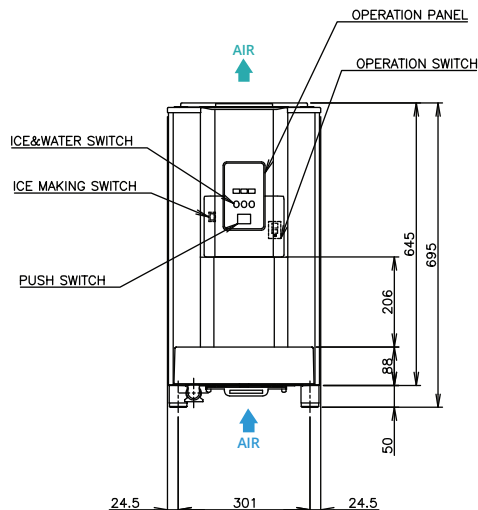


ICE SHAPE

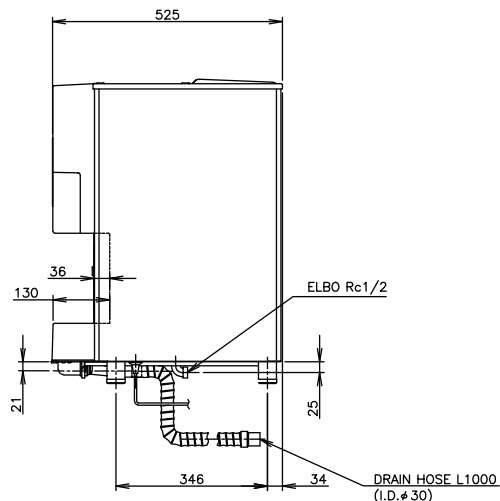
Cubelet
Compressed Flake Ice



FRONT



RIGHT SIDE



MODEL		DCM-80LS-P-HC	
ICE SHAPE		Cubelet (Compressed Flake Ice)	
POWER SUPPLY		1 Phase 220-240V 50Hz Capacity: 0.48kVA (2.1A)	
AMPERAGE		1.7A Starting: 8.3A	
ELECTRIC CONSUMPTION		290W	
HEAT REJECTION		(AT32°C / WT21°C) 620W	
ICE PRODUCTION PER 24H	(AT10°C / WT10°C)	Approx. 80kg	
	(AT21°C / WT15°C)	Approx. 65kg	
	(AT32°C / WT21°C)	Approx. 50kg	
ICE DISPENSING RATE (40G / CUP)	(AT10°C / WT10°C)	Approx. 130 cups/h	
	(AT21°C / WT15°C)	Approx. 115 cups/h	
	(AT32°C / WT21°C)	Approx. 99 cups/h	
STORAGE CAPACITY		Approx. 1.9kg	
WATER CONSUMPTION PER 24H	(AT32°C / WT21°C)	50 L	
REFRIGERANT		R290	
OUTSIDE DIMENSIONS		Carton: 350mm (W) x 525mm (D) x 695(~710)mm (H)	
PACKAGE		Carton: 400mm (W) x 581mm (D) x 749mm (H)	
WEIGHT		41kg (Gross: 44kg)	
OPERATING CONDITIONS		Ambient Temp.: 5-40°C, Water Supply Temp.: 5-35°C,	
		Water Supply Pressure: 0.05-0.78MPa	
		Voltage Range: Rated Voltage ±6%	



HOSHIZAKI

PT. HOSHIZAKI INDONESIA

